

## UEBDM R MR

Stainless steel tube cover unit, machine cleaning, 3x, round, height-adjustable

UEBDM R MR are 3x, round tube cover units with abutting edges. They are height-adjustable cassette mounting frames with tube outlet cassettes. They come with a bolted aluminium tube mounting kit and rubber seal and are installed in floor sockets, mounting covers and raised or false floor openings. They can be equipped with mounting boxes or installation devices. The units are suitable for wet-cleaned floors in rooms with office traffic loads that are cleaned with floor cleaning machines. The cassette and frame are made of stainless steel and the tube mounting kit is made of aluminium.



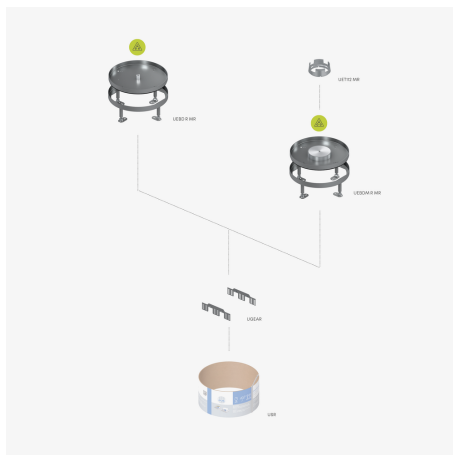
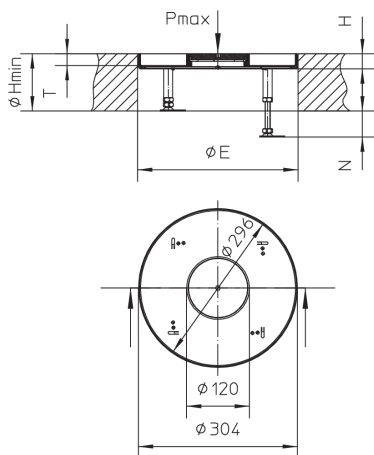
Stainless steel, according to ASTM 304 / BS 304 S 3

Products	H <sub>min</sub>	P <sub>max</sub>	IP <sub>g</sub>	IP <sub>n</sub>	E	N	weight
UEBDM 25-R-MR	110 mm	2,00 kN	IP-43	IP-66	307 mm	55 mm	2,965 kg

**H<sub>min</sub>**: minimum installation height  
**P<sub>max</sub>**: maximum load  
**IP<sub>g</sub>**: IP protection level in used condition  
**IP<sub>n</sub>**: IP protection level in unused condition  
**E**: fitting dimension  
**N**: levelling range

## DETAIL AND APPLICATION IMAGES





## OPTIONAL ACCESSORIES

UGEAR, UBDSLIF, UGM, UGM SLF, UET112 R MR



, DIN EN 50085

